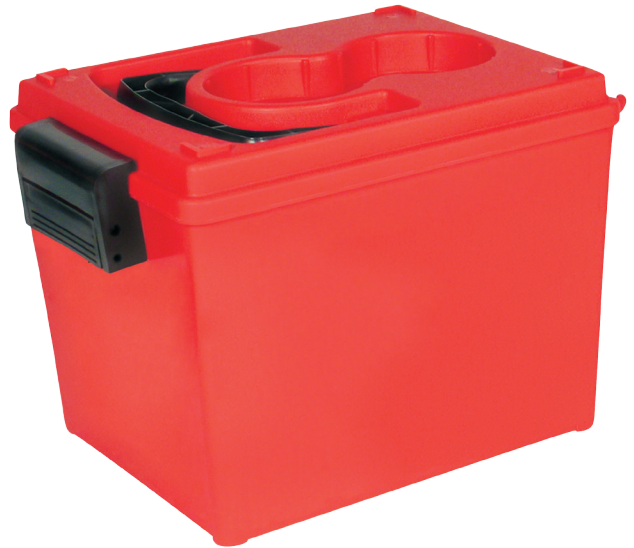




INSTRUCTION MANUAL



DIRECTIONS FOR USE

The Zodi accessory case is the perfect case for storing and transporting gear and other items. The Zodi Accessory case is water tight with a durable clasp to secure the case closed. Cases have 4 corner posts for easy stacking of multiple cases perfect for storing all your gear and other items

REMOVING CASE LID

To remove the case lid, unclasp the lid by pulling the bottom of the black case latch away from the case. While grabbing both sides of the case latch, pull the top portion of the case latch upward while pushing down on the case lid. Then slide the case latch away from the case. The case latch should be fully separated from the case lid. Lift up the lid and open the case fully so the portion of the case where the latch attaches is positioned on the ground. Hold the case down with one hand and grab one side of the case lid where the hinges are attached to the case, and pull up. The case lid should detach fully from the bottom of the case at the hinge.

PROPANE HOLDER

The case has a removable lid perfect for holding Zodi Showers and Heaters in addition to other Propane Accessories in a vertical position when attached to the disposable propane cylinders. Simply Remove the Case Lid from the case and securely position propane cylinder in the propane cylinder cavity of nearest to the case latch. If the cylinder is too loose, wrap the propane cylinder with a small wrap of tape before inserting into the base.

REATTACHING CASE LID

To reattach, align the opening of the hinges of the lid above the hinge rods of the case. Press down so hinges fully attach to the hinge rods of the case. Close the case lid onto the case so the case latch aligns with the three case latch lid teeth. While grabbing both sides of the case latch, pull the case latch upward and toward the case. Slide down the case latch over the three case latch teeth on the case lid. Push down on the case lid as you push the bottom of the case latch downward to secure the case closed.

CAUTION

Always place on firm flat ground clear of flammable materials following all warnings and cautions on the Zodi Showers and Heaters as well as the propane cylinder. Zodi assumes no responsibility for improper use.

Assembled in China. Designed in Park City Utah USA.

ZODI™ UPGRADES



Zodi™ Shower Pole

Enjoy hands-free showering. Adjustable height. Works with all Zodi™ Showers and Zodi™ Hut shower shelter.

Item# 1068



Hot Tap™ Shower

Our best selling on-demand water heater and hot shower. Enjoy unlimited hot water in seconds.

Item# 6185



i.HUT™

Enjoy this self-supporting privacy shelter anywhere. Almost 4 feet wide per side. Includes oversized detachable floor.

Item# 1077